

JobTrek IPSC HotSOS Server

INTEGRATES HotSOS WORK TICKET MANAGEMENT PROGRAM WITH DIGITAL TWO-WAY RADIOS

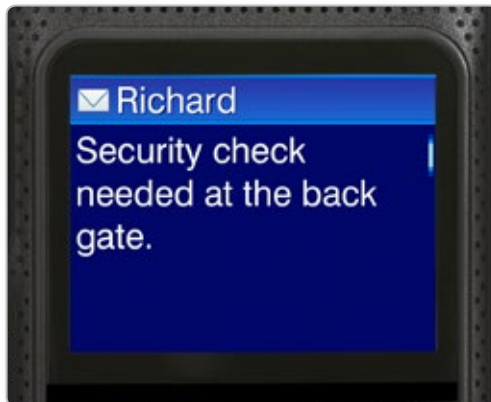
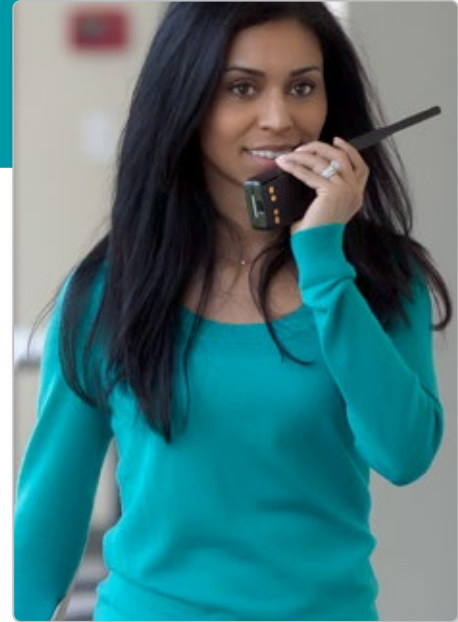
Receive HotSOS work orders directly on Motorola MOTOTRBO™ Professional Digital Two-Way Radio Systems.



HotSOS

JobTrek IPSC HotSOS Server is an enterprise solution that enables hospitality users to connect the power of their digital two-way radios to their HotSOS work ticket management program for more reliable and timely response to customer requests and emergency issues.

JobTrek IPSC HotSOS Server uses a web service to connect to the HotSOS data base **without the need for email.**



Sends written work requests to radios

Busy maintenance, engineering, security or other key personnel can easily misunderstand, overlook or forget verbal work requests made over their radios. JobTrek IPSC HotSOS Server enables written work requests to be sent from your work ticket management program directly to the screen of a radio for more effective communication.

Manage responses with historical work order records

A unique feature, JobTrek IPSC HotSOS Server automatically logs each transmitted work order and employee acknowledgement. Reports can be easily generated and reviewed to track open issues, diagnose problems and optimize work flow.

Sender	Destination	Message	Date	Time	Message ID
64250	107	908470 RM: 2333 Guest: Unknown Issue: Toothbrush Request Note: 1	10/5/2014	11:57:52 PM	<9EADDED8B0>
64250	107	908471 RM: 2333 Guest: Unknown Issue: Toothbrush Request Note: 1	10/5/2014	11:58:53 PM	<4D6A0C82C7F>
64250	107	908472 RM: 1012 Guest: Unknown Issue: Bath Towel Request Note: 1	10/5/2014	12:14:03 AM	<F4E42DE6450>
107	64250	908470 Complete	10/5/2014	12:14:19 AM	<9EADDED8B0>
64250	301	908474 RM: 3435 Guest: Mitchell, Eby (SLV ELITE) Issue: Toilet Overfl.	10/5/2014	12:16:04 AM	<0C14676A815>
301	64250	908474 Accept	10/5/2014	12:17:29 AM	<0C14676A815>
301	64250	908474 Accept	10/5/2014	12:17:46 AM	<0C14676A815>
64250	107	908477 RM: 3435 Guest: Mitchell, Eby (SLV ELITE) Issue: Set of Towel...	10/5/2014	12:27:06 AM	<408885A8295>
107	64250	908477 Accept	10/5/2014	12:27:28 AM	<408885A8295>
107	64250	908477 Complete	10/5/2014	12:27:35 AM	<4D6A0C82C7F>
107	64250	908472 Accept	10/5/2014	12:28:32 AM	<F4E42DE6450>
107	64250	908472 Complete	10/5/2014	12:46:55 AM	<408885A8295>
107	64250	908472 Complete	10/5/2014	12:47:11 AM	<F4E42DE6450>
64250	107	908483 RM: 4230 Guest: Unknown Issue: Razor Request Note: Erlam...	10/5/2014	5:49:09 AM	<F7C3DCD315C>
107	64250	908483 Accept	10/5/2014	5:49:48 AM	<F7C3DCD315C>
107	64250	908483 Complete	10/5/2014	5:54:20 AM	<F7C3DCD315C>
64250	107	908487 RM: 2429 Guest: Unknown Issue: Coffee Request - Decaf Note...	10/5/2014	6:32:46 AM	<9EADDED8B0>
107	64250	908487 Accept	10/5/2014	6:33:27 AM	<9EADDED8B0>
64250	301	908488 RM: 3117 Guest: Unknown Issue: Shower Controls Problem/Co...	10/5/2014	6:33:47 AM	<414519E29302>
301	64250	908488 Accept	10/5/2014	6:34:28 AM	<414519E29302>
64250	301	908489 RM: 3117 Guest: Unknown Issue: Television (TV) Problem Note...	10/5/2014	6:34:52 AM	<CEB2FFB986>
301	64250	908489 Accept	10/5/2014	6:35:28 AM	<CEB2FFB986>
107	64250	908487 Complete	10/5/2014	6:44:14 AM	<9EADDED8B0>
301	64250	908489 Accept	10/5/2014	6:53:42 AM	<CEB2FFB986>
301	64250	908489 Accept	10/5/2014	6:59:26 AM	<CEB2FFB986>

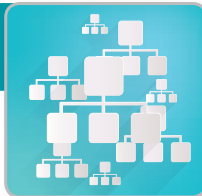


Connects to radios that are turned off

For maximum reliability, work tickets and alerts can be sent to designated radios whether they are turned on or off. The message or alert is delivered once the radio is activated.

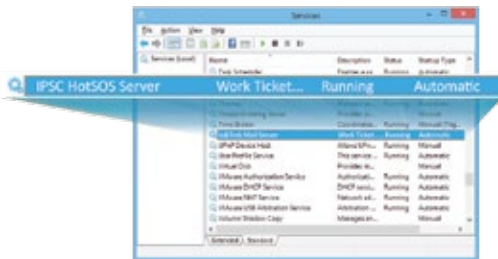
Supports variety of radio system configurations

JobTrek IPSC HotSOS Server supports standalone, single-site, multi-site, IP Site Connect, Capacity Plus, Linked Capacity Plus and Connect Plus systems. Contact us for configuration information. MOTOTRBO™ Control Signaling Block (CSBK) compatible.



Runs as a Windows service

JobTrek IPSC HotSOS Server does not require monitoring by personnel. It can run as a Windows service or with a graphic user interface. Should the computer lose power or shut down, the program will automatically restart when the computer reboots.



JobTrek IPSC HotSOS Server System Requirements

Server Computer Requirements

- > Microsoft Windows® 7 Professional 64-bit, Windows 8.1 Professional 64-bit, Windows 10 Professional 64-bit, or Windows Server 2012 64-bit with 1 Administrator Login (**Windows Server 2012 is the preferred Operating System**)
- > 4 GB of RAM
- > 250 GB of available hard-disk space
- > 1 free USB port per MOTOTRBO radio (if applicable)
- > MSSQL 2014 Express Server or higher downloaded to computer
- > Motorola NAI MNIS and DDMS are required for Linked Capacity Plus **only**
- > Network or internet access at repeater site (where required)



MOTOROLA SOLUTIONS



Contact us today to find out how JobTrek IPSC HotSOS Server can help you better respond to customer requests and emergencies.

StreetTrek™ Solutions

866.531.7676 | www.StreetTrek.com