

# StreetTrek IPSC Location & Messaging Server

ACQUIRE DATA FROM RADIOS FOR REAL-TIME ASSET TRACKING AND TEXT MESSAGING

Enables GPS tracking of mobile and portable assets and text messaging to personnel by acquiring data from Motorola MOTOTRBO™ Professional Digital Two-Way Radio Systems.



StreetTrek IPSC Location & Messaging Server enables you to keep your fleet or other mobile assets at your fingertips 24/7 by receiving real-time information from MOTOTRBO™ radio systems, and to improve communication by enabling text messaging with personnel.

StreetTrek IPSC Location & Messaging Server connects directly to standalone, single-site, multi-site, IP Site Connect, Capacity Plus and Linked Capacity Plus systems, **without the need for control stations**. It has its own built-in POP3 and SMTP mail servers – no internet connectivity required.



## Locate assets 24/7 using StreetTrek GPS tracking solutions

StreetTrek IPSC Location & Messaging Server acquires MOTOTRBO™ GPS location data for use with StreetTrek3™, StreetTrek Explorer™, StreetTrek Web™ and StreetTrek 4U mapping solutions. These enable you to track the location of every radio in your system with detailed street-level Tele Atlas North American or high-resolution Google Earth maps. Real-time 24/7 access to data enables you to protect your assets and keep personnel safe.

## Improve field communications and productivity

Dispatchers can locate the closest vehicles or personnel to where they are needed – to reduce fuel usage, allocate assets most efficiently, streamline work shifts and improve customer service.



## Additional GPS tracking capabilities include:

Map view with customizable overlay

Map & satellite views

Map, satellite, hybrid and street level views

Address search

Real-time traffic and construction zone updates (where available)

Geofence alerts help prevent unauthorized vehicle usage

Telemetry alerts you to changes in vehicle status

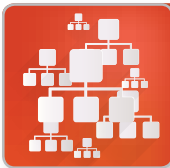
Historical reports document location, speed and status of assets

StreetTrek3	StreetTrek Explorer	StreetTrek / StreetTrek 4U Web
<input type="checkbox"/>		
		<input type="checkbox"/>
	<input type="checkbox"/>	
<input type="checkbox"/>	<input type="checkbox"/>	
	<input type="checkbox"/>	
<input type="checkbox"/>	<input type="checkbox"/>	
<input type="checkbox"/>	<input type="checkbox"/>	
<input type="checkbox"/>	<input type="checkbox"/>	



## Communicate more effectively with text messaging

Busy personnel can easily misunderstand, overlook or forget verbal requests made over their radios. StreetTrek IPSC Location & Messaging Server allows dispatchers to exchange text messages with radios for more effective communication. Appropriate text messaging client is required. Email to radios (additional cost option) also available.



## Supports variety of radio system configurations

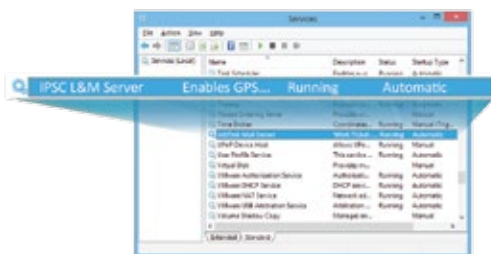
StreetTrek IPSC Location & Messaging Server supports standalone, single-site, multi-site, IP Site Connect, Capacity Plus and Linked Capacity Plus systems. Contact us for configuration information. MOTOTRBO™ Control Signaling Block (CSBK) compatible.

## Track issues with historical records

The server allows you to keep a record of all inbound and outbound messages, so that you can review communication, track open issues and streamline operations.

## Runs as a Windows service

StreetTrek IPSC Location & Messaging Server does not require monitoring by personnel. It can run as a Windows service or with a graphic user interface.



Should the computer lose power or shut down, the program will automatically restart when the computer reboots.

## StreetTrek IPSC Location & Messaging Server

### System Requirements

#### Server Computer Requirements

- > Microsoft Windows® 7 Professional 64-bit, Windows 8.1 Professional 64-bit, Windows 10 Professional 64-bit, or Windows Server 2012 64-bit with 1 Administrator Login (**Windows Server 2012 is the preferred Operating System**)
- > 4 GB of RAM
- > 250 GB of available hard-disk space
- > 1 free USB port per MOTOTRBO radio (if applicable)
- > MSSQL 2014 Express Server or higher downloaded to computer
- > Motorola NAI MNIS and DDMS are required for Linked Capacity Plus **only**
- > Network or internet access at repeater site (where required)

#### Client System Requirements

- > Microsoft Windows® 7 64-bit, Windows 8.1 64-bit, or Windows 10 64-bit
- > 4 GB of RAM
- > 250 GB of available hard-disk space
- > Ethernet/Internet



Contact us today to find out how StreetTrek IPSC Location & Messaging Server can help you manage your mobile assets and improve communication.

# StreetTrek™ Solutions

866.531.7676 | [www.StreetTrek.com](http://www.StreetTrek.com)