

# StreetTrek Location & Messaging Server

ACQUIRE DATA FROM RADIOS FOR REAL-TIME ASSET TRACKING AND TEXT MESSAGING

Enables GPS tracking of mobile and portable assets and text messaging to personnel by acquiring data from Motorola MOTOTRBO™ Professional Digital Two-Way Radio Systems.



StreetTrek Location & Messaging Server enables you to keep your fleet or other mobile assets at your fingertips 24/7 by receiving real-time information from MOTOTRBO™ radio systems, and to improve communication by enabling text messaging with personnel.

StreetTrek Location & Messaging Server is optimized for applications when network connectivity at the repeater site(s) is not available. **Requires control stations.**



## Locate assets 24/7 using StreetTrek GPS tracking solutions

StreetTrek Location & Messaging Server acquires MOTOTRBO™ GPS location data for use with StreetTrek3™, StreetTrek Explorer™, StreetTrek Web™ and StreetTrek 4U mapping solutions. These enable you to track the location of every radio in your system with detailed street-level Tele Atlas North American or high-resolution Google Earth maps. Real-time 24/7 access to data enables you to protect your assets and keep personnel safe.

## Improve field communications and productivity

Dispatchers can locate the closest vehicles or personnel to where they are needed – to reduce fuel usage, allocate assets most efficiently, streamline work shifts and improve customer service.



## Additional GPS tracking capabilities include:

- Map view with customizable overlay**
- Map & satellite views**
- Map, satellite, hybrid and street level views**
- Address search**
- Real-time traffic and construction zone updates** (where available)
- Geofence alerts** help prevent unauthorized vehicle usage
- Telemetry** alerts you to changes in vehicle status
- Historical reports** document location, speed and status of assets

	StreetTrek3	StreetTrek Explorer	StreetTrek / StreetTrek 4U Web
Map view with customizable overlay	<input type="checkbox"/>		
Map & satellite views			<input type="checkbox"/>
Map, satellite, hybrid and street level views		<input type="checkbox"/>	
Address search	<input type="checkbox"/>	<input type="checkbox"/>	
Real-time traffic and construction zone updates (where available)		<input type="checkbox"/>	
Geofence alerts help prevent unauthorized vehicle usage	<input type="checkbox"/>	<input type="checkbox"/>	
Telemetry alerts you to changes in vehicle status	<input type="checkbox"/>	<input type="checkbox"/>	
Historical reports document location, speed and status of assets	<input type="checkbox"/>	<input type="checkbox"/>	

## Communicate more effectively with text messaging

Busy personnel can easily misunderstand, overlook or forget verbal requests made over their radios. StreetTrek Location & Messaging Server allows dispatchers to exchange text messages with radios for more effective communication. Appropriate text messaging client is required. Email to radios (additional cost option) also available.

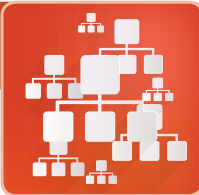
## Track issues with historical record

StreetTrek Location & Messaging Server allows you to keep a record of all inbound and outbound messages, so that you can review communication, track open issues and streamline operations.



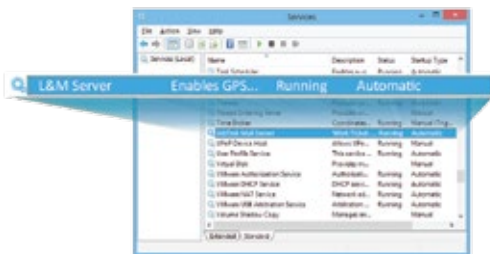
## Supports variety of radio system configurations

Supports standalone, single-site, multi-site, IP Site Connect and Capacity Plus systems. Contact us for configuration information. MOTOTRBO™ Control Signaling Block (CSBK) compatible.



## Runs as a Windows service

StreetTrek Location & Messaging Server does not require monitoring by personnel. It can run as a Windows service or with a graphic user interface.



Should the computer lose power or shut down, the program will automatically restart when the computer reboots.

## StreetTrek Location & Messaging Server System Requirements

### Server Computer Requirements

- > Microsoft Windows® 7 Professional 64-bit, Windows 8.1 Professional 64-bit, Windows 10 Professional 64-bit, or Windows Server 2012 64-bit with 1 Administrator Login (**Windows Server 2012 is the preferred Operating System**)
- > 4 GB of RAM
- > 250 GB of available hard-disk space
- > 1 free USB port per MOTOTRBO radio (if applicable)
- > MSSQL 2014 Express Server or higher downloaded to computer
- > Motorola NAI MNIS and DDMS are required for Linked Capacity Plus **only**
- > Network or internet access at repeater site (where required)

### Client System Requirements

- > Microsoft Windows® 7 64-bit, Windows 8.1 64-bit, or Windows 10 64-bit
- > 4 GB of RAM
- > 250 GB of available hard-disk space
- > Ethernet/Internet



Contact us today to find out how StreetTrek Location & Messaging Server can help you manage your mobile assets and improve communication.

# StreetTrek™ Solutions

866.531.7676 | [www.StreetTrek.com](http://www.StreetTrek.com)